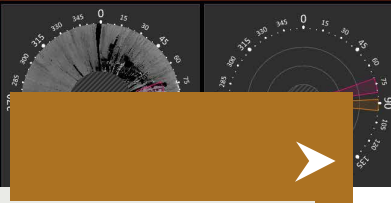


→ Sniper detection with SPYNEL



# Spynel-X



**WIDE AREA**

**SURVEILLANCE SYSTEM**

➤ **360° INTRUSION DETECTION, ANYWHERE, ANYTIME**

Spynel is a unique wide-area surveillance system, acquiring real-time full panoramic images with automatic intrusion detection and tracking capabilities. Capturing videos with an unequalled resolution of up to 120 Mpix, Spynel-X provides powerful situation awareness over 360 degrees, with the highest detection range in its category. Associated with Cyclope advanced motion detection software, it provides unprecedented real-time security against conventional and asymmetrical threats, in the whole surroundings, up to the horizon.

➤ **EARLY TARGET DISCRIMINATION FOR FAST REACTION**

Compact and robust, Spynel can be quickly deployed to perform early intrusion alert over extremely large areas in total darkness, fog, smoke. An unlimited number of tracks are simultaneously identified on highly resolved images, including hardly detectable threats, such as crawling men, UAVs, stealth aircrafts. As a completely passive system, it is invisible to intruders, cannot be tricked by camouflage nor jamming. It operates 24/7, whatever the weather. Using a high-end MWIR sensor, Spynel-X exhibits high performance, including in warm and humid regions.



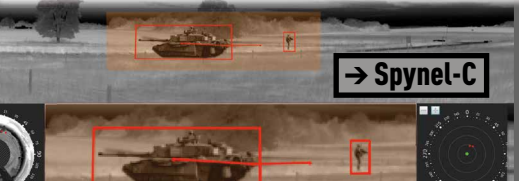
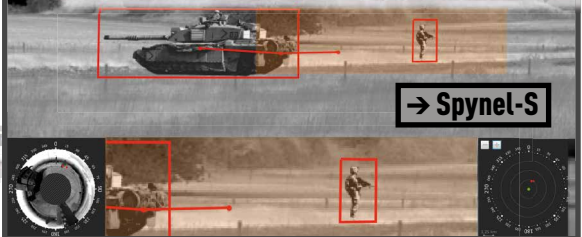
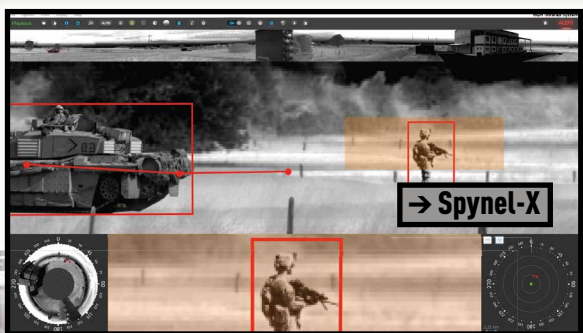
→ SPYNEL-X ROTATING SENSOR

➤ **APPLICATIONS**

- Persistent wide area surveillance
- 24/7 perimeter security
- 360° asymmetrical threats detection
- Airport / airfield surveillance
- Critical infrastructure protection
- Surveillance of forward operating bases
- UAV, low air target tracking
- Border and coastal passive surveillance
- Self-protection of ships
- Fight against piracy and smuggling

➤ **BENEFITS**

- Top-of-the-range system in the Spynel series
- Cost effective and reliable surveillance system
- Full 360-degree panoramic coverage with a single sensor
- Long range surveillance up to the horizon
- Day and night panoramic scrutiny even in adverse weather conditions
- Automatic, simultaneous tracking of all threats with superior image quality
- Compact, robust, lightweight equipment, for a fast deployment
- Fully passive system, totally undetectable



→ SPYNEL series: automatic detection, recognition, identification



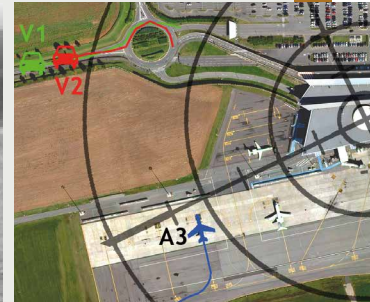
# Spynel-X

PANORAMIC INFRARED

VISION SYSTEM






→ SPYNEL-X threat detection & identification over 360°



→ Tracks displayed on situation map

## TECHNICAL

### SENSOR

	Spynel-X 3500	Spynel-X 6000	Spynel-X 8000
Horizontal FOV	360°	360°	360°
Vertical FOV	20°	10°	5°
Vertical adjustable tilt (motorized)	± 45° (motorized)	± 45° (motorized)	± 45° (motorized)
IFOV	0.3 x 0.3 mrad x mrad	0.15 x 0.15 mrad x mrad	0.08 x 0.08 mrad x mrad
Scanning speed	1 rps (360°/sec)	1 rps (360°/sec)	0.5 rps (360°/2sec)
Detector type	MWIR megapixel FPA	MWIR megapixel FPA	MWIR megapixel FPA
Cooling	Stirling microcooler	Stirling microcooler	Stirling microcooler
Image resolution	23 000 (H) x 1280 (V)	46 000 (H) x 1280 (V)	92 000 (H) x 1280 (V)
Video output and control	IP	IP	IP
Dimensions(Dia x H)	385 mm x 580 mm	385 mm x 580 mm	385 mm x 580 mm
Weight	< 40 kg	< 40 kg	< 40 kg
Operating temperature	-40°C to +71°C	-40°C to +71°C	-40°C to +71°C
Protection standard	IP 66	IP 66	IP 66
Power supply	24V DC / 10 Amps	24V DC / 10 Amps	24V DC / 10 Amps
Detection range for			
human : 	Up to 3.5 km	Up to 6 km	Up to 8 km
car : 	Up to 7 km	Up to 12 km	Up to 15 km
tank : 	Up to 21 km	Up to 25 km	Up to 30 km

### CONTROL AND DISPLAY SOFTWARE

Operating system: PC Windows – multiple screen and touch screen capabilities

Software functions: Get full advantage of Spynel sensor with Cyclope software. Cyclope provides, at a glance, **real time panoramic display** (360° strip, annular, radar & zoom views), **designation and tracking** of an unlimited number of targets, immediate **threat location** (azimuth, elevation, distance), GPS, AIS and radar **data integration**, automatic **control of PTZ** systems for target identification, **forensic capabilities** (timeline, sequence storage and playback), spatial and temporal bookmarks, multiple **threats displayed on situation map**, fine **image stabilization** and more...

Above information is subject to changes without notice

